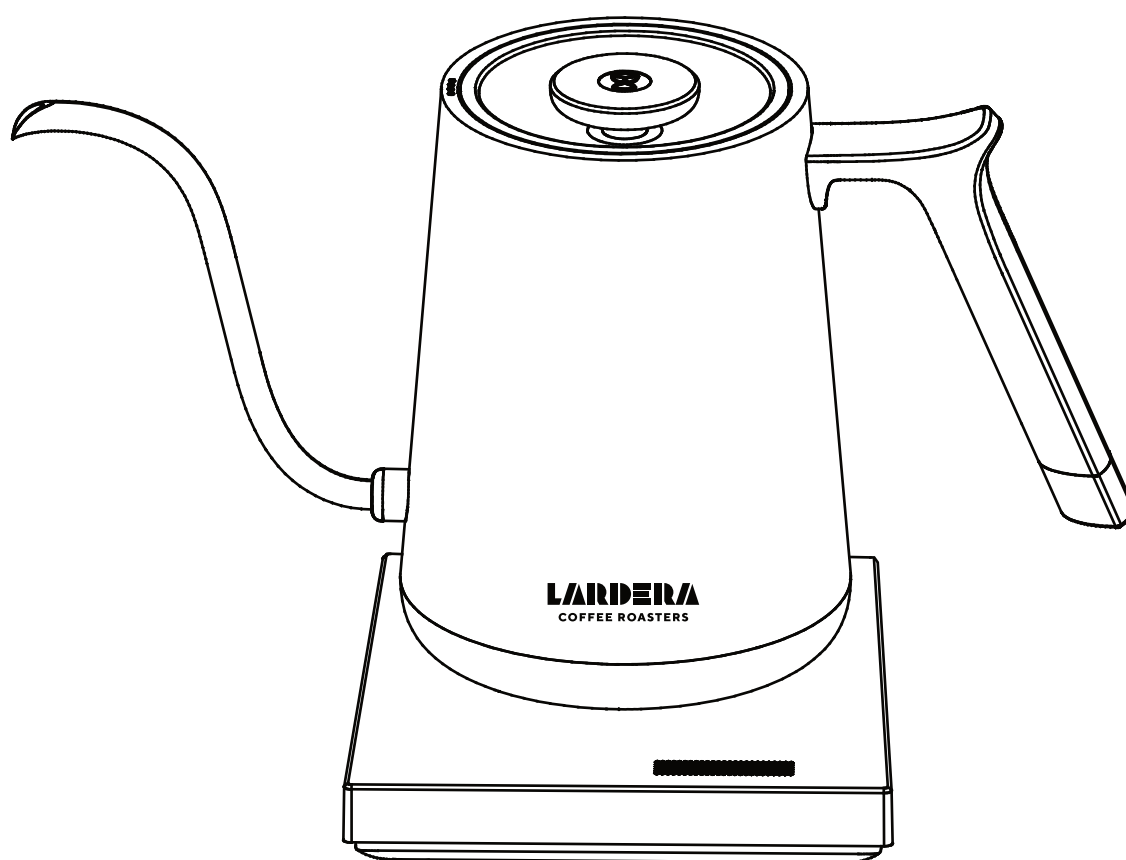




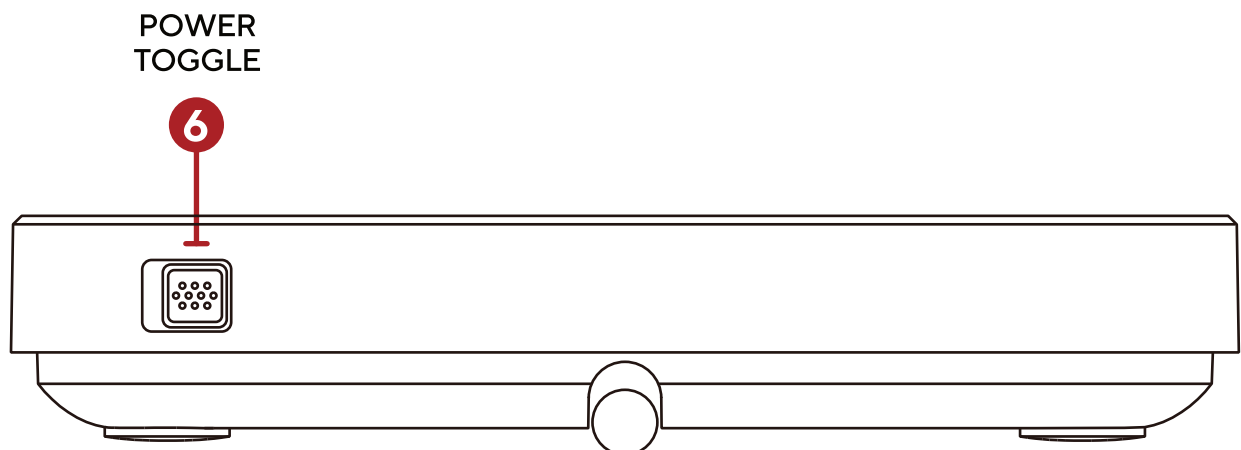
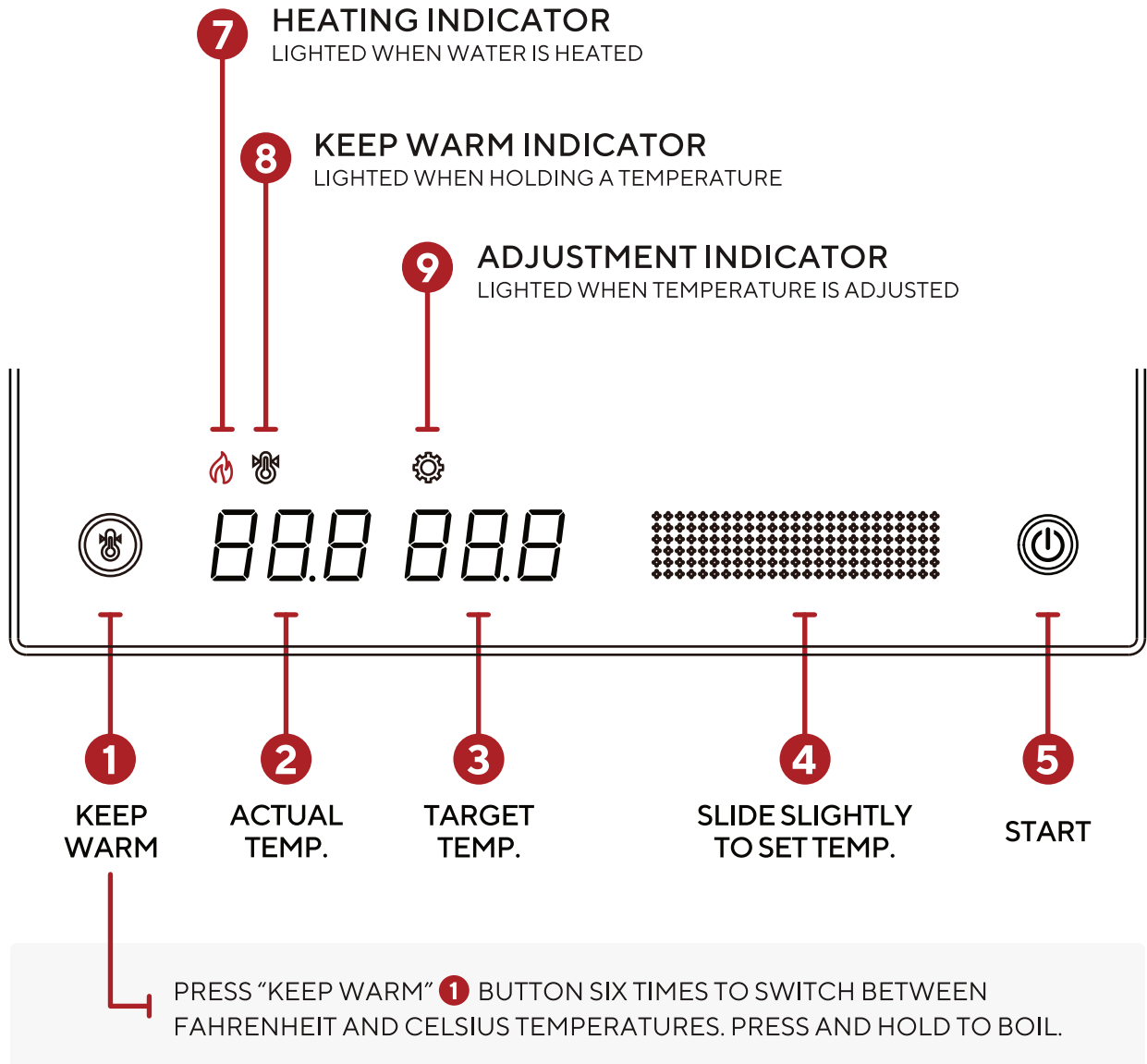
LARDERA
COFFEE ROASTERS



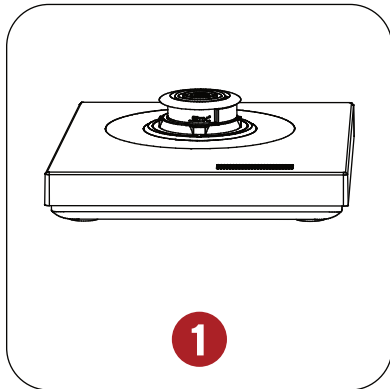
SMART ELECTRIC KETTLE

DESIGNED BY TIMEMORE

BUTTONS & DISPLAYS



HOW TO USE

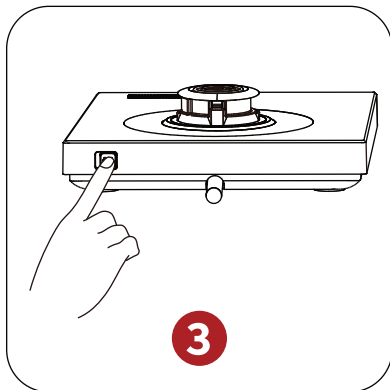


**PLACE DEVICE ON
A FLAT SURFACE**



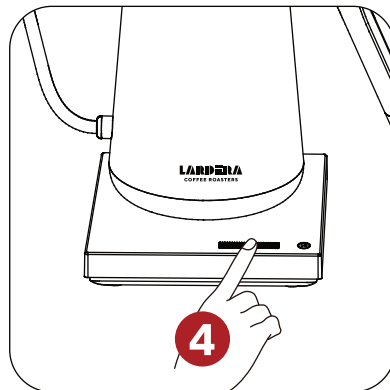
**REMOVE LID
AND ADD WATER**

MAX 27oz



**TURN ON THE
POWER TOGGLE**

BACK OF BASE



**SET TARGET
TEMPERATURE**

USING SLIDER



**PRESS START BUTTON
TO HEAT WATER**

TO YOUR SELECTED TEMPERATURE



**PRESS KEEP WARM
BUTTON TO MAINTAIN
SET TEMPERATURE.**

WARNINGS

1. Do not fill kettle above max level (27oz or 800ml)
2. Use spring or filtered water to avoid scale build-up.
3. Never heat when kettle is empty.
4. Do not heat any liquids other than water.
5. Avoid touching the kettle surface when hot.
6. Turn off the power toggle when not in use.
7. Use the lid to avoid burns from hot water or steam.
8. Keep out of reach of children and pets.
9. Do not disassemble or alter any parts of the kettle.
10. Keep the base dry and avoid contact with water.
11. At high altitudes, water temperature may not reach target.
12. To remove scale deposits, descale kettle regularly.

